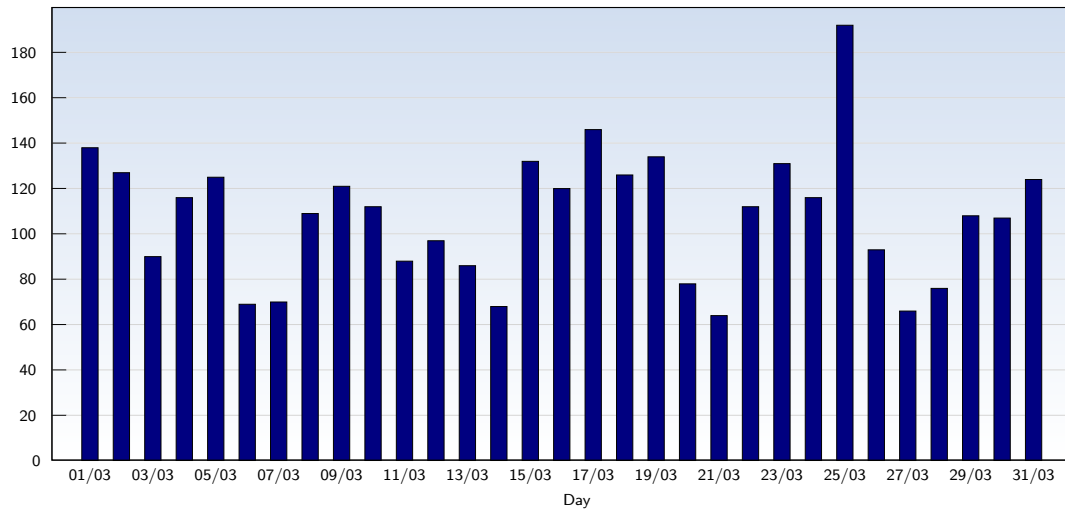


## Unique Visits

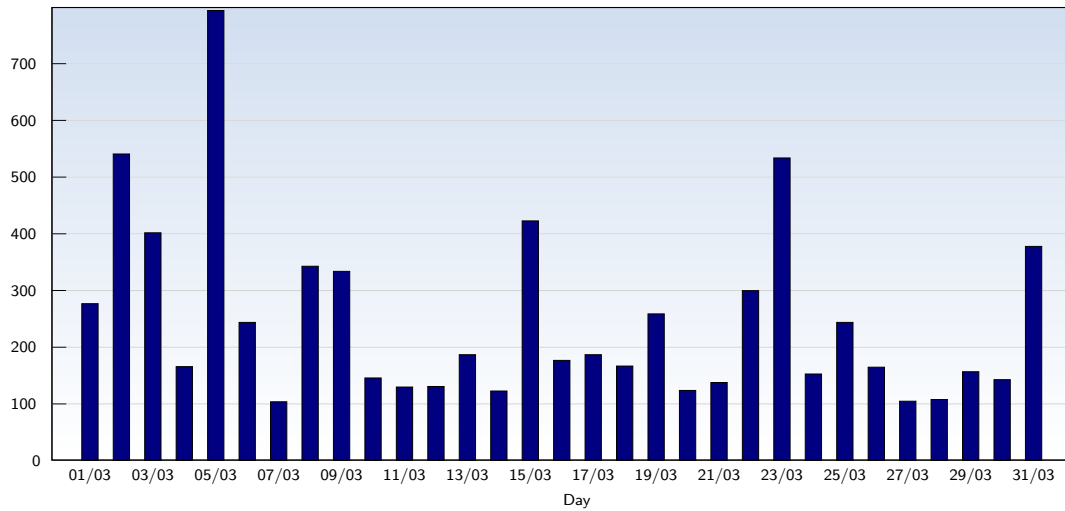


Date	Amount
Monday 01/03/10	138
Tuesday 02/03/10	127
Wednesday 03/03/10	90
Thursday 04/03/10	116
Friday 05/03/10	125
Saturday 06/03/10	69
Sunday 07/03/10	70
Monday 08/03/10	109
Tuesday 09/03/10	121
Wednesday 10/03/10	112
Thursday 11/03/10	88
Friday 12/03/10	97
Saturday 13/03/10	86
Sunday 14/03/10	68
Monday 15/03/10	132
Tuesday 16/03/10	120

Date	Amount
Wednesday 17/03/10	146
Thursday 18/03/10	126
Friday 19/03/10	134
Saturday 20/03/10	78
Sunday 21/03/10	64
Monday 22/03/10	112
Tuesday 23/03/10	131
Wednesday 24/03/10	116
Thursday 25/03/10	192
Friday 26/03/10	93
Saturday 27/03/10	66
Sunday 28/03/10	76
Monday 29/03/10	108
Tuesday 30/03/10	107
Wednesday 31/03/10	124
<b>Total</b>	<b>3341</b>

This analysis summarises multiple page impressions of an individual visitor into unique visits. A visitor is counted as an unique visit when requesting at least one page. If more than 30 minutes have elapsed since the first page impression, further requests will be counted as a new unique visit.

## Page Views

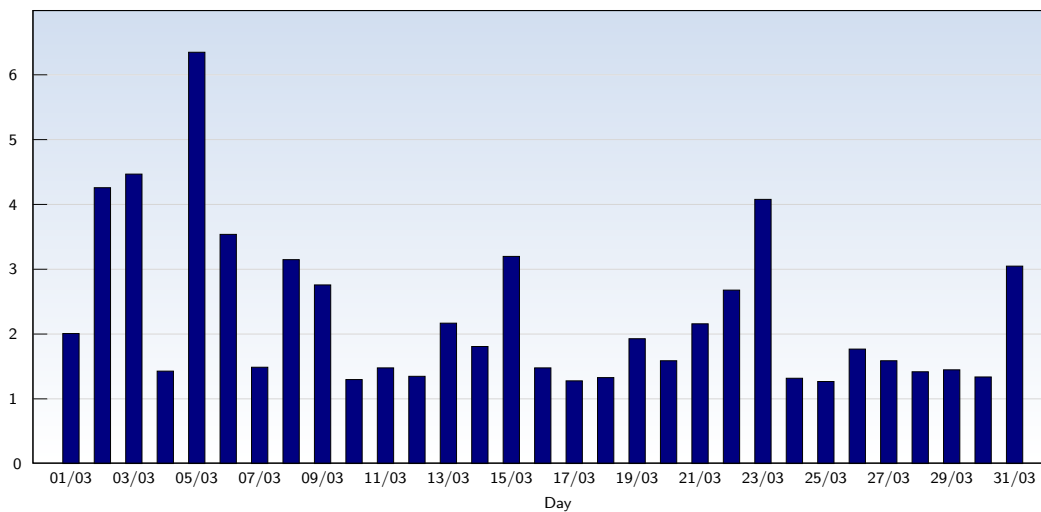


Date	Amount
Monday 01/03/10	277
Tuesday 02/03/10	541
Wednesday 03/03/10	402
Thursday 04/03/10	166
Friday 05/03/10	794
Saturday 06/03/10	244
Sunday 07/03/10	104
Monday 08/03/10	343
Tuesday 09/03/10	334
Wednesday 10/03/10	146
Thursday 11/03/10	130
Friday 12/03/10	131
Saturday 13/03/10	187
Sunday 14/03/10	123
Monday 15/03/10	423
Tuesday 16/03/10	177

Date	Amount
Wednesday 17/03/10	187
Thursday 18/03/10	167
Friday 19/03/10	259
Saturday 20/03/10	124
Sunday 21/03/10	138
Monday 22/03/10	300
Tuesday 23/03/10	534
Wednesday 24/03/10	153
Thursday 25/03/10	244
Friday 26/03/10	165
Saturday 27/03/10	105
Sunday 28/03/10	108
Monday 29/03/10	157
Tuesday 30/03/10	143
Wednesday 31/03/10	378
<b>Total</b>	<b>7684</b>

These statistics show all successful page views (also known as page impressions) and the time they were made. Only fully loaded pages are counted. Individual images and components are not included.

## Pages per Visit

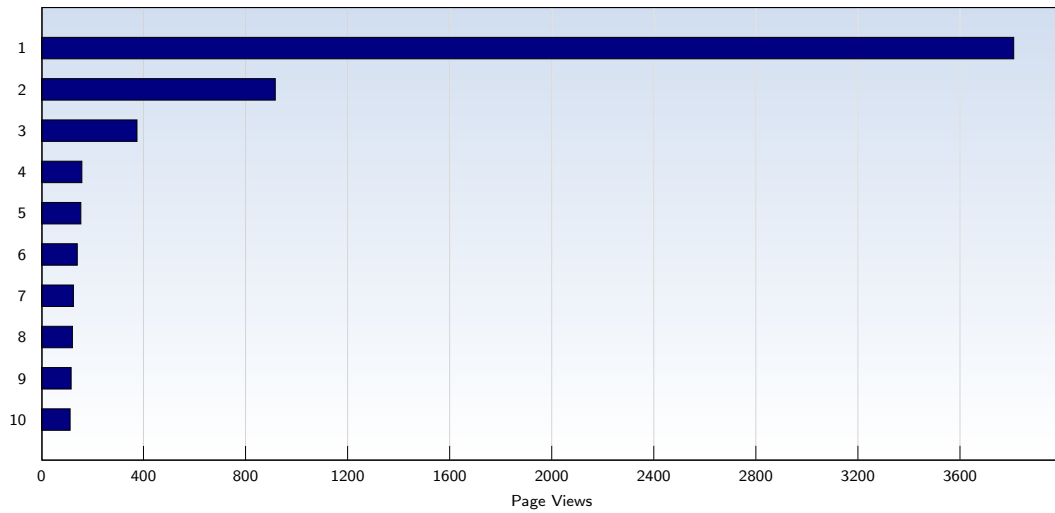


Date	Amount
Monday 01/03/10	2.01
Tuesday 02/03/10	4.26
Wednesday 03/03/10	4.47
Thursday 04/03/10	1.43
Friday 05/03/10	6.35
Saturday 06/03/10	3.54
Sunday 07/03/10	1.49
Monday 08/03/10	3.15
Tuesday 09/03/10	2.76
Wednesday 10/03/10	1.30
Thursday 11/03/10	1.48
Friday 12/03/10	1.35
Saturday 13/03/10	2.17
Sunday 14/03/10	1.81
Monday 15/03/10	3.20
Tuesday 16/03/10	1.48

Date	Amount
Wednesday 17/03/10	1.28
Thursday 18/03/10	1.33
Friday 19/03/10	1.93
Saturday 20/03/10	1.59
Sunday 21/03/10	2.16
Monday 22/03/10	2.68
Tuesday 23/03/10	4.08
Wednesday 24/03/10	1.32
Thursday 25/03/10	1.27
Friday 26/03/10	1.77
Saturday 27/03/10	1.59
Sunday 28/03/10	1.42
Monday 29/03/10	1.45
Tuesday 30/03/10	1.34
Wednesday 31/03/10	3.05
<b>Average</b>	<b>2.30</b>

The average number of pages opened per unique visit. Only fully loaded pages are counted.

## Top 10 Popular Pages

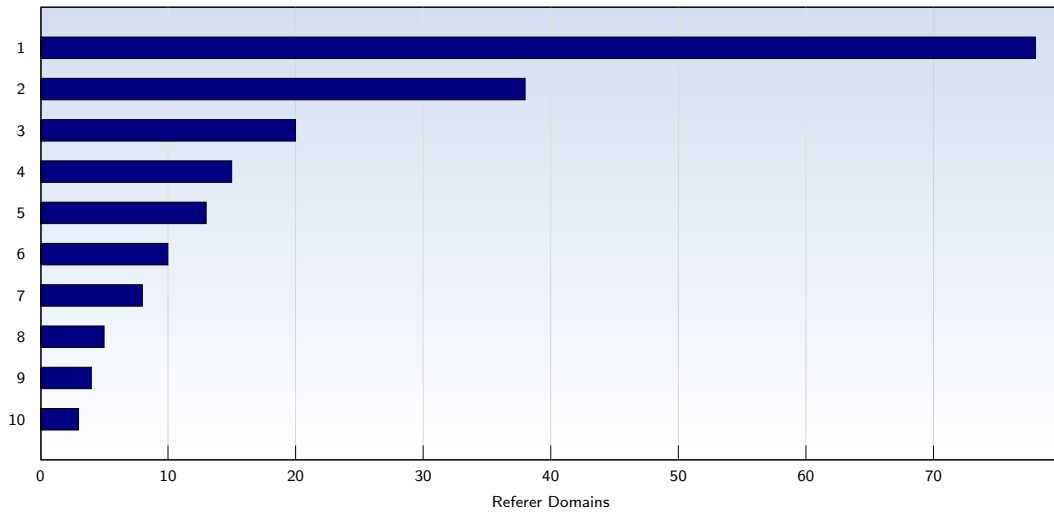


Rank	Page	Amount	%
1	jag.org.uk/tinc	3811	49
2	jag.org.uk/	917	11
3	jag.org.uk/Forum/phpBB3/ucp.php	375	4
4	jag.org.uk/Forum.html	159	2
5	jag.org.uk/Classified.html	155	2
6	jag.org.uk/Events.html	141	1
7	jag.org.uk/Contacts.html	126	1
8	jag.org.uk/Gallery.html	122	1
9	jag.org.uk/index.html	117	1
10	jag.org.uk/Services.html	113	1
	<b>Total</b>	<b>7684</b>	

These statistics show you the most frequently called pages.



## Top 10 Referer Domains



Rank	Domain	Amount	%
1	google.co.uk	78	2
2	topgear.com	38	1
3	yahoo.com	20	0
4	jec.org.uk	15	0
5	ask.com	13	0
6	bing.com	10	0
7	aol.co.uk	8	0
8	google.com	5	0
9	oxcmc.org.uk	4	0
10	fsnet.co.uk	3	0
	<b>Total</b>	<b>221</b>	

221 out of 3341 visits contained a referer that could be evaluated. This analysis shows domains referring to your site. Subpages are summarised under the main domain.